



£210,000

Church Road

London, E12 6HN

Offered for sale is this recently decorated ground floor apartment with rear garden set within a period conversion.

The property features a front reception room with bay window, 1 bedroom, under stair storage, family bathroom and kitchen to rear of the property which leads onto the rear garden.

Located close to a range of shops and amenities which are close by as well Little Ilford Park being just a short walk.

On street permit parking is available as well as bus links which have access to Manor Park, Woodgrange Park and Ilford Stations giving easy access to the City.

Offered on a chain free basis.

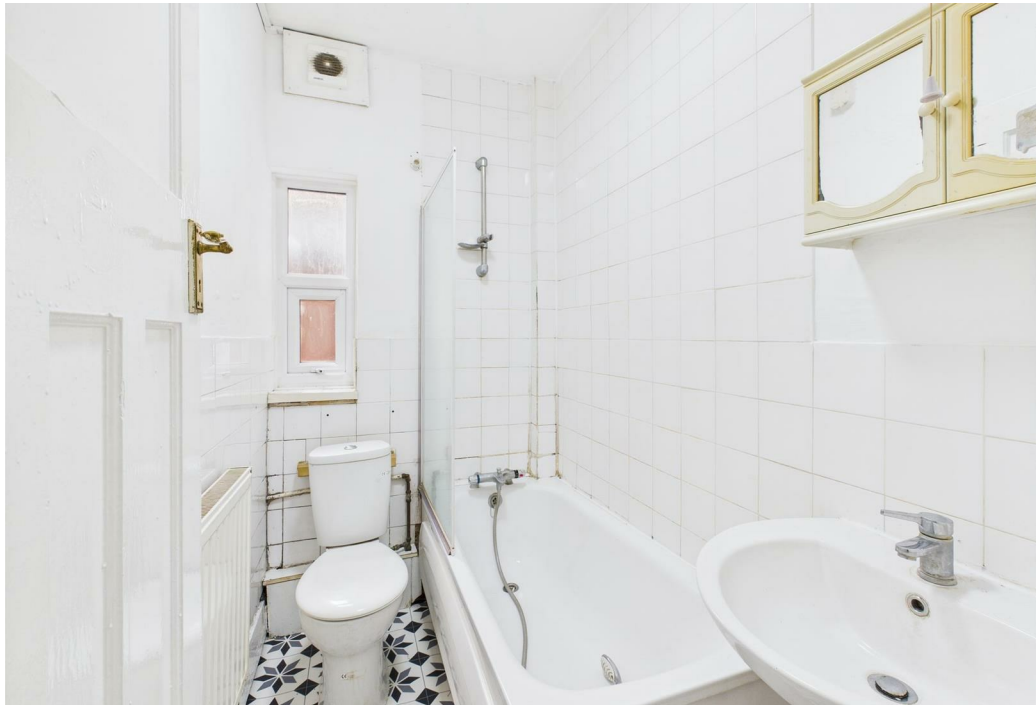
Leasehold: 953 years remaining

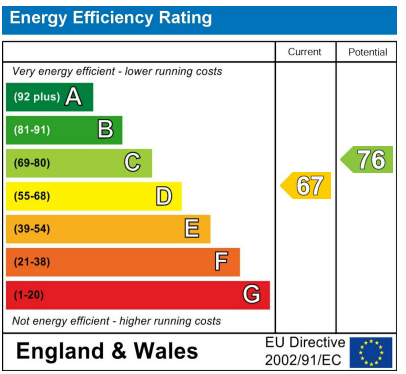
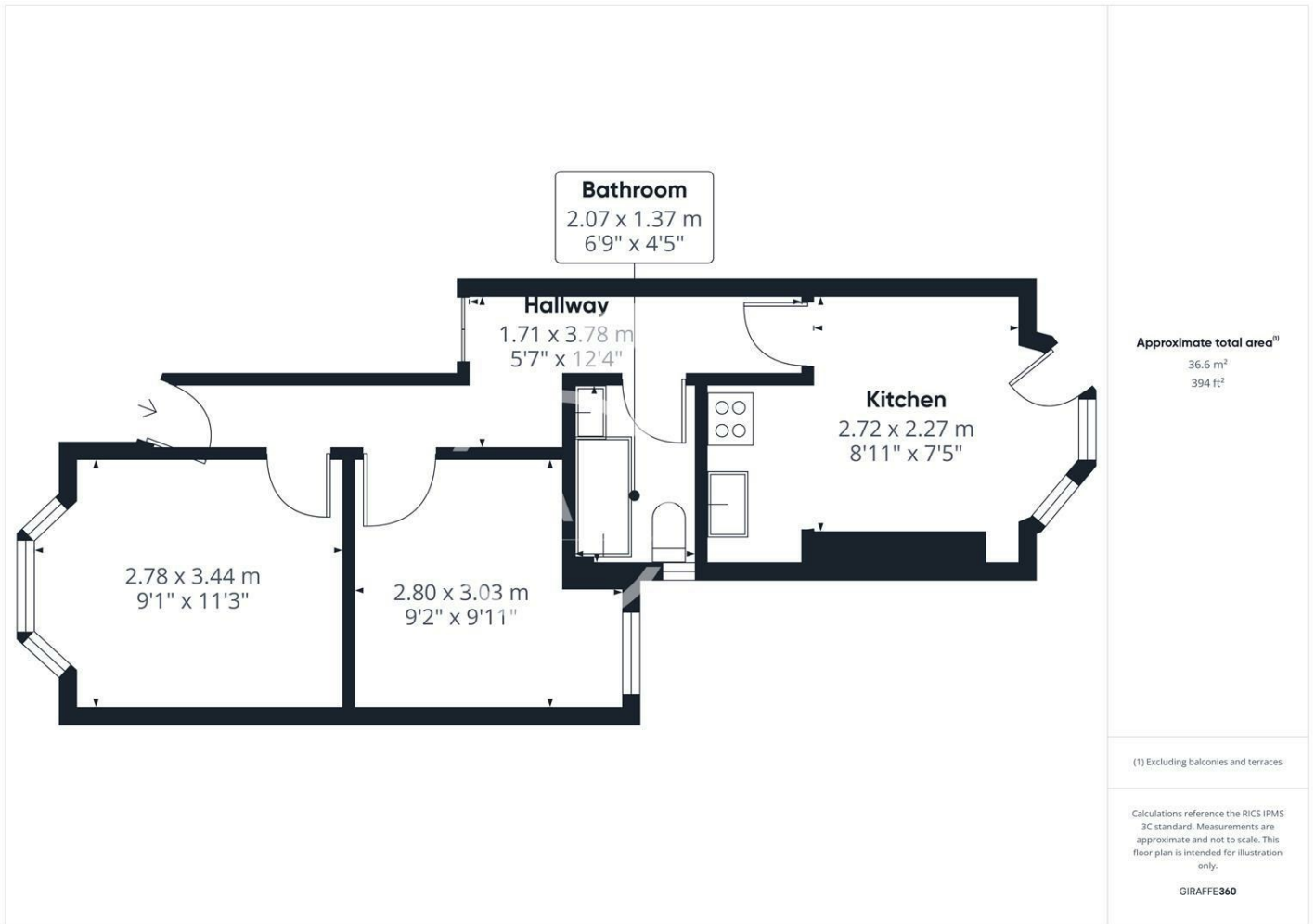
Service Charge: no service charge

Ground Rent: peppercorn

Council Tax: Band B (Newham Council)







Agents Note: Whilst every care has been taken to prepare these particulars, they are for guidance purposes only. All measurements are approximate and are for general guidance purposes only and whilst every care has been taken to ensure their accuracy, they should not be relied upon and potential buyers/tenants are advised to recheck the measurements

| | |
|---------------------------------------------------------------------------|---------------------------------------------------------------------------------------------------------|
| <p>OFFICE ADDRESS 88 Cheshire Street London E2 6EH</p> | <p>OFFICE DETAILS 0207 739 6969 info@peachproperties.com www.peachproperties.com</p> |
|---------------------------------------------------------------------------|---------------------------------------------------------------------------------------------------------|